

GREEN ENERGY

Getting Power, Staying Green!



Releases
New

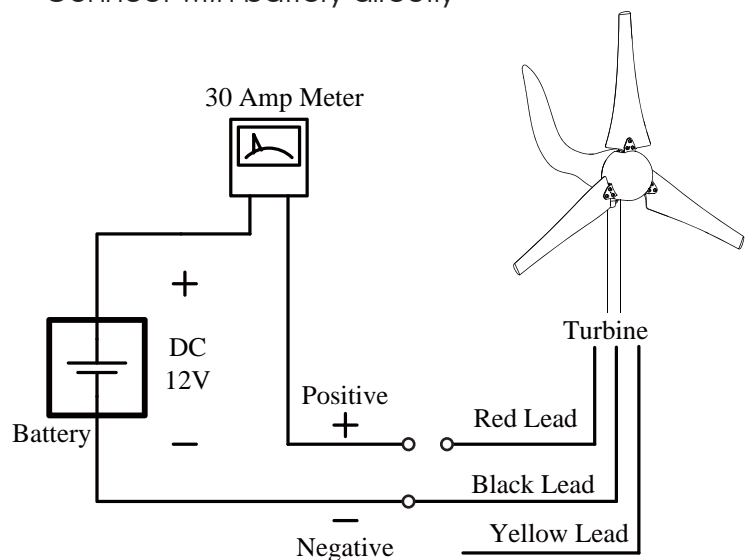
Light

Simple

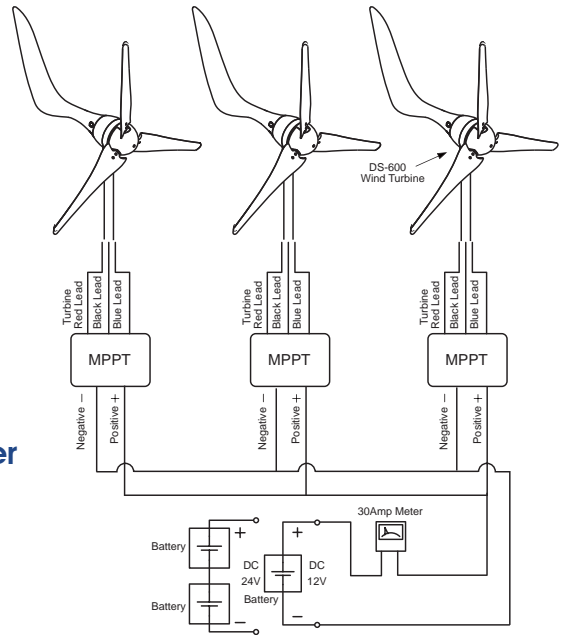
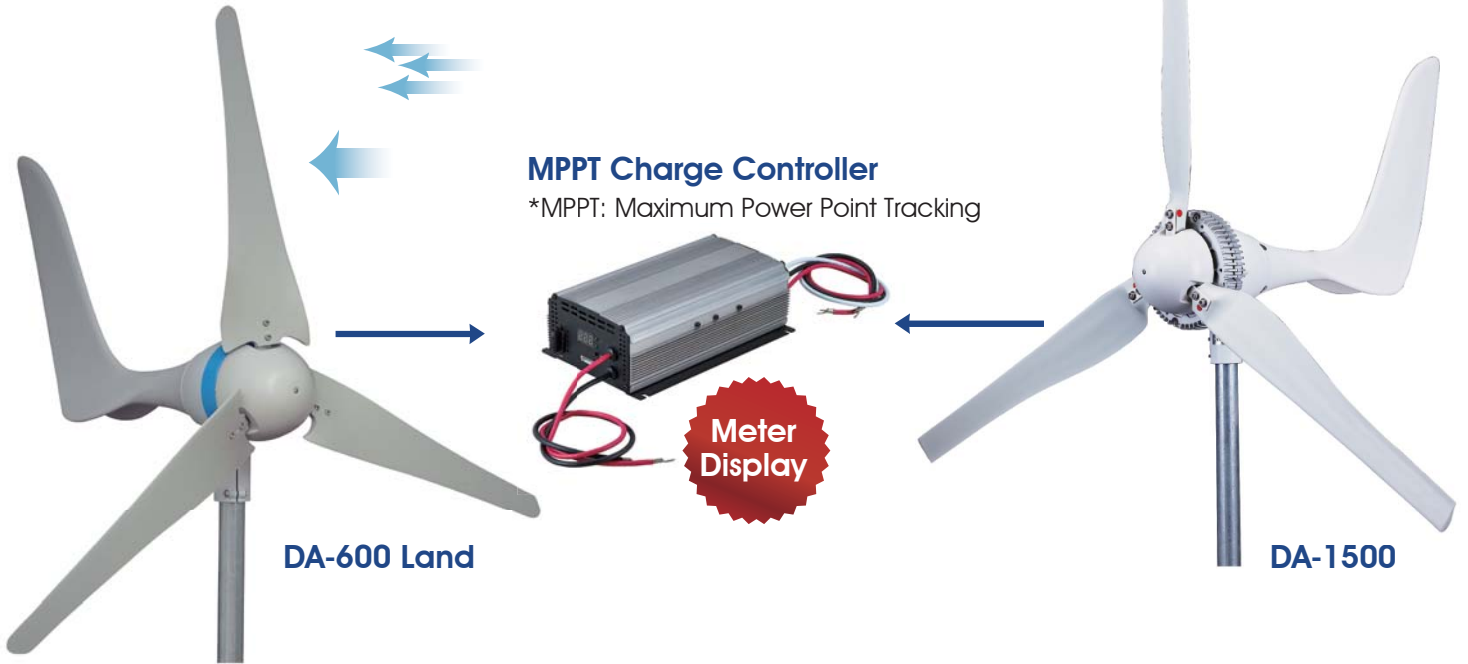
Eco-Friendly

400W WIND TURBINE

- 4 steps to set up
- Overcharge protection
- Built-in charge controller
- Connect with battery directly



DIY WIND TURBINE

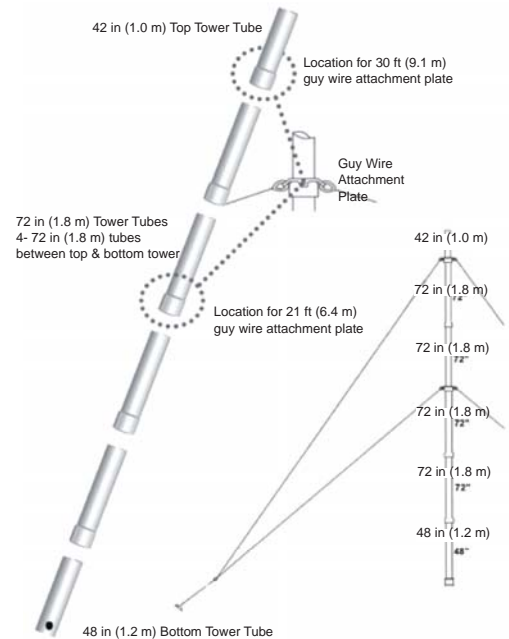


Item No.	DB-400	DA-600 Land	DS-600 Marine	DA-1500
Rated speed	14 M/S (46 FT/S)	12.5 M/S (41 FT/S)	12.5 M/S (41 FT/S)	14 M/S (46 FT/S)
Rated power	400W	600W	600 W	1500W
Voltage with MPPT	0-15V	12V and 24V	12V and 24V	24V
Rotor diameter	1.22M (4 FT)	1.3M (4.2 FT)	1.3M (4.2 FT)	1.7M (5.6 FT)
Cut-in wind speed	3 M/S (6.7 MPH)	2 M/S (4.5 MPH)	2 M/S (4.5 MPH)	2.5 M/S (5.6 MPH)
Survival wind speed	50 M/S (110 MPH)	70 M/S (157 MPH)	70 M/S (157 MPH)	60 M/S (134 MPH)
Number of blades	3	3	3	3
Blade material	Plastic steel	Glass fiber	Glass fiber	PP+Glass fiber
Suggested battery capacity	>50 A/HR	>100 A/HR	>100 A/HR	>200 A/HR
Weight	7.6 KG	9 KG	9 KG	15 KG

TOWER KIT FOR WIND TURBINE



POLE FOR LAND (10M)



Including:

- | | | |
|-------------------------------------|-------------------------------------|-------------------------------------|
| 1. Tower Base x 1 | 2. 21FT Guy Wire Set x 1 | 7. Cable Clamps x 16 |
| 3. 30FT Guy Wire Set x 1 | 4. M10 x 65MM Bolt x 1 | 10. Earth Anchor Driving Rod x 1 |
| 5. M10 Locknut x 1 | 6. Cable Thimbles x 8 | 13. 4.76 CM x 1.0 M Tower Tubes x 1 |
| 8. Tower Base Earth Spikes x 4 | 9. Arrowhead Earth Anchors x 4 | |
| 11. 4.76 CM x 1.8 M Tower Tubes x 4 | 12. 4.76 CM x 1.2 M Tower Tubes x 1 | |

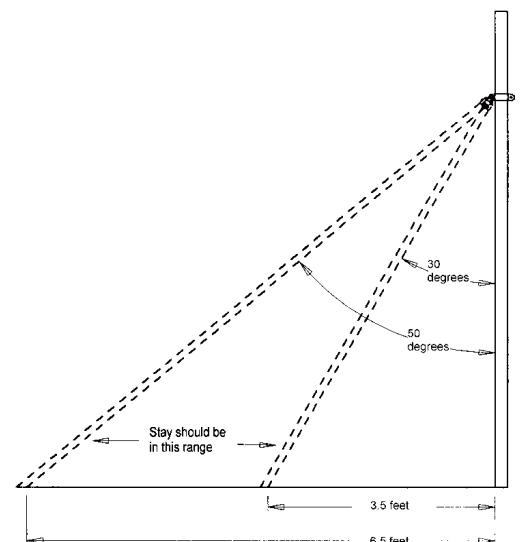


POLE FOR BOAT (2.7M)

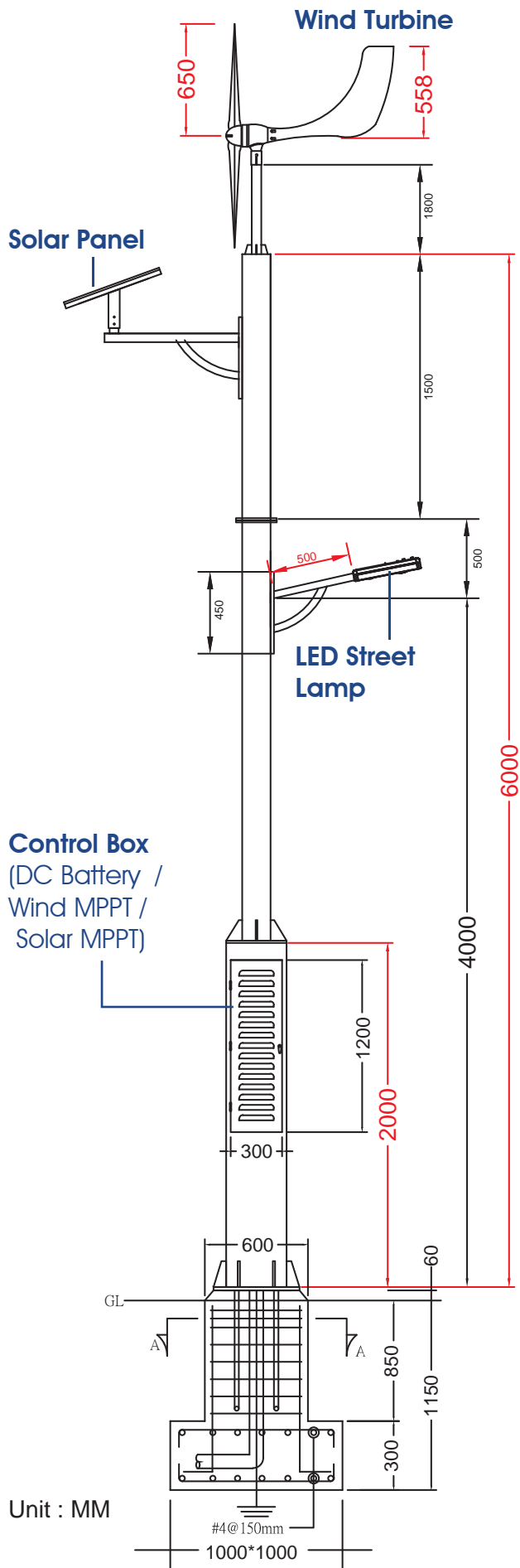


Including:

1. Stainless steel end caps x 4
2. Mast vibration dampening mount x 1 (with bolt, washers, nut and bracket)
3. Stay vibration dampening mounts x 2
4. Stay base bracket x 2
5. Mast hinge base angle brackets x 2
6. Mast saddle straps x 4
7. Mast wiring grommet x 1
8. Stainless steel socket head screws x 12
9. Screws x 2
10. Nylon lock nuts x 12
11. Stainless steel extra thick washer x 2
12. Lock washer x 2
13. Thick rubber adapter sleeve (for stainless steel towers only) x 1
14. Powder coated or stainless steel mast x 1
15. Powder coated or stainless steel stays x 2



HYBRID STREET LAMP SYSTEM



Solar Panel

Rated power	195W
Open circuit voltage	29.87V
Short circuit current	8.48A
Max. power voltage	23.9V
Max. power current	8.16A
Module efficiency	14.95%
Solar cell efficiency	17.2%
Operating temperature	-40°C ~ +85°C
Weight	15.7 KG
Dimension	1310 x 989 x 45 MM

LED Street Lamp

Rated power	55W±5
Operating voltage	DC 12V
Operating current	3.75A
Color temperature	5000 K (3000 K Available)
Output luminous flux	> 5100 LM (White)
Color rendering index (CRI)	Ra≥80
Effective illuminated area (from 6m height)	> 20 M x 8 M
Life cycle	> 30000 HRS
Optical decline rate	3000 HRS < 10%
Illuminance as distance	73 LUX (4m high)
Operating humidity (RH)	10 ~ 95%
Operating temperature	-40°C ~ +50°C
Weight	6.5 KG
Dimension	440 x 225 x 120 MM

Battery

Nominal voltage	DC 12V
Capacity	75 A/HR x 2 (150 A/HR)
Life cycle (full discharge)	> 200 TIMES
DIN type battery (electrolyte)	5.2 L
Terminal type	B2
Operating temperature	-20°C ~ +50°C
Weight	26 KG
Dimension	260 x 168 x 223 MM

Gross weight : 350 - 400 KG

Average wind speed : @ 6 M/S, 1500W/DAY

Solar : 195W Panel + Solar MPPT

LED street lamp : 5000K (3000K available)

Solar MPPT Charge Controller

Rated power	200W
Rated input current	5A
Charging start voltage	DC 6V
Input voltage range	DC 6V - 50V
Output voltage	DC 12V
Max. charging current	16.66A
Max. charging efficiency	> 85%
Battery low shutdown	DC 11.5V \pm 5%
Battery floating charge	DC 13.8V \pm 5%
DC load current	Max. 16A
DC load management	16 kinds
Operating temperature	-20°C ~ +40°C
Weight	1.7 KG
Dimension	200 x 142 x 50 MM



Wind Turbine

Item No.	DA-600	DA-1500
Rated speed	12.5 M/S (41 FT/S)	14 M/S (46 FT/S)
Rated power	600W	1500W
Voltage with MPPT	12V and 24V	24V
Rotor diameter	1.3 M (4.2 FT)	1.7 M (5.6 FT)
Cut-in wind speed	2 M/S (4.5 MPH)	2.5 M/S (5.6 MPH)
Survival wind speed	70 M/S (157 MPH)	60 M/S (134 MPH)
Number of blades	3	3
Blade material	Glass fiber	PP + Glass fiber
Suggested battery capacity	> 100 A/HR	> 200 A/HR
Weight	9 KG	15 KG

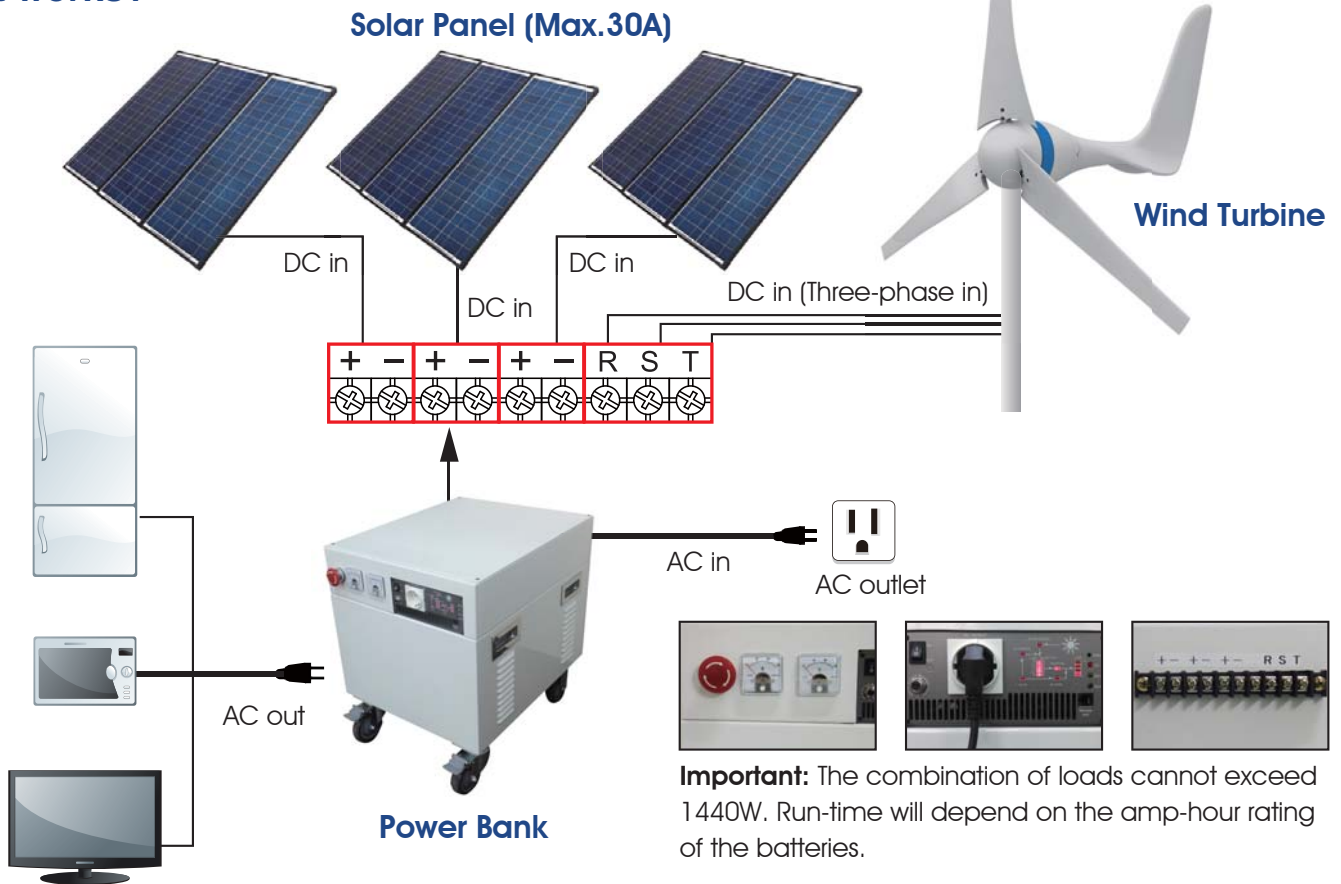
Wind MPPT Charge Controller

Output power	12V / 24V Auto detect	24V
Input voltage range	5 ~ 75 VRMS	5 ~ 75 VRMS
Charging efficiency	> 97% ~ 99%	\geq 95%
Battery protection voltage	12V - 14.4V (Lead-acid batteries) or 15.8V (Deep-cycle batteries) 24V - 28.8V (Lead-acid batteries) or 30V (Deep-cycle batteries)	29.5 \pm 1V (Lead-acid batteries) or 31V \pm 1V (Deep-cycle batteries)
Rated load current	Max. 35 A	Max. 45 A
Over-speed braking	\leq 1400 RPM	< 1000 RPM

1500W POWER STATION

- Use green energy whenever and wherever it's required
- Hybrid power from Wind, Sun and Power Grid
- Power source priority from green energy or power grid is selectable
- Transfer time is within 10 ms bypass
- Selectable UPS (Uninterruptible Power Supply) or power saving mode
- Dimension : 60(L) x 45 (W) x 58.5(H) CM / Weight : 85 KG (Power bank only)

How it works?



Important: The combination of loads cannot exceed 1440W. Run-time will depend on the amp-hour rating of the batteries.

Battery

Nominal voltage	DC 12V
Capacity	100 A/HR x 2 (200 A/HR)
Life cycle (full discharge)	>200 Times
DIN type battery (electrolyte)	5.2 L
Terminal type	B2
Operating temperature	-20°C ~ +50°C
Weight	32.5 KG
Dimension	338 x 217 x 170 MM

DIN: The German Battery Standards

AC Cable for Wind Turbine

	Tower to Turbine AWG#8 x 3 (10 M)
	MPPT to DC AWG#8 x 2 (1 M)

* Tower pole kit for wind turbine : Please refer to the details of tower pole kit introduction. (P2)

Power Deliver to Wherever Your Go !

Wind Turbine

Item No.	DA-600	DA-1500
Rated speed	12.5 M/S (41 FT/S)	14 M/S (41 FT/S)
Rated power	600W	1500W
Voltage with MPPT	12V and 24V	24V
Rotor diameter	1.3 M (4.2 FT)	1.7 M (5.6 FT)
Cut-in wind speed	2 M/S (4.5 MPH)	2.5 M/S (5.6 MPH)
Survival wind speed	70 M/S (157 MPH)	60 M/S (134 MPH)
Number of blades	3	3
Blade material	Glass fiber	PP + Glass fiber
Suggested battery capacity	> 100 A/HR	> 200 A/HR
Weight	9 KG	15 KG

Wind MPPT Charge Controller

Output power	12V / 24V Auto detect	24V
Input voltage range	5 ~ 75 Vrms	5 ~ 75 Vrms
Charging efficiency	> 97% ~ 99%	≥ 95%
Battery protection voltage	12V - 14.4V (Lead-acid batteries) or 15.8V (Deep-cycle batteries) 24V - 28.8V (Lead-acid batteries) or 30V (Deep-cycle batteries)	29.5±1V (Lead-acid batteries) or 31V±1V (Deep-cycle batteries)
Rated load current	Max. 35A	Max. 45A
Over-speed braking	≤ 1400 RPM	< 1000 RPM

1500W Pure Sine Wave Inverter

Max. power	1500W	
Surge power	3000W	
AC output	110V	230V
AC frequency	60 Hz	50 Hz
Waveform	Pure Sine Wave (THD < 3.0%)	
Transfer time	10 ms inverter ↔ BY PASS	
DC input	12V (10.5 ~ 15VDC)	
DC current	150A	
Efficiency	Up to 90%	
AC charger	Charge current : 5.5A	
	Battery charge voltage : 14.3V ± 4%	

- * Selectable output voltage/frequency
- * Low battery alarm and indicator
- * Fully digital controlled function

450W Solar Panel (150W x 3sets)

Rated power	150W (50W x 3 PCS)
One panel (50W) spec.	
Rated voltage	DC 12V
Current at max. power (Imp)	2.69A
Open circuit voltage (Voc)	22.03V
Short circuit current (Isc)	2.85A
Operating temperature	-40°C ~ +85°C
Weight	10.9 KG / SET
Dimension	925 x 330 x 25 MM / SET

Solar Charger

Max. open circuit voltage	25V
Charge current	Max. 30A
Battery charge voltage	14.3V ± 4%

150W SOLAR 12V POWER GENERATOR KIT

Perfect for

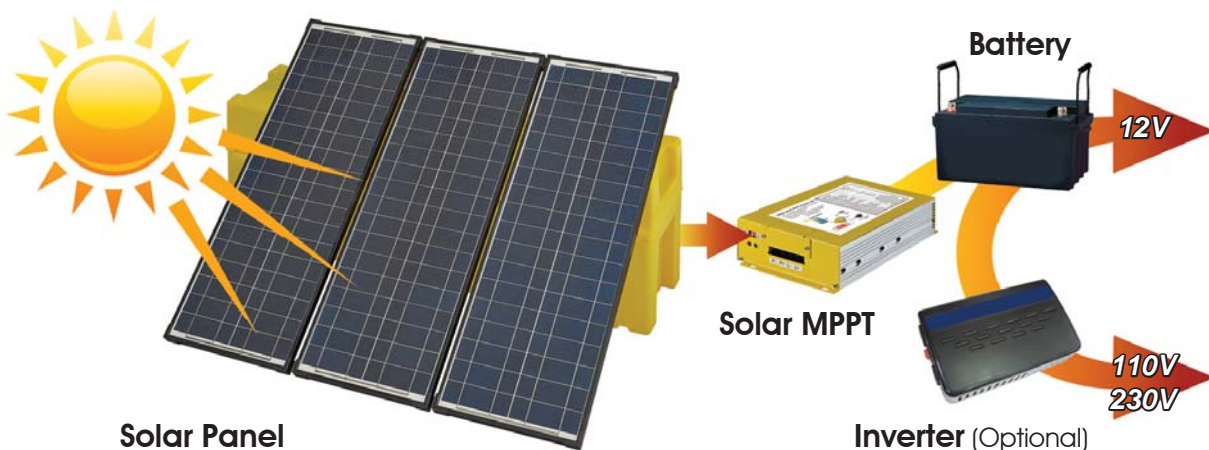


- Item No.: JSB1501201
- Eco-friendly
- Light, movable, easy-to-install
- MPPT makes solar power transforming more efficiency
- Charge battery directly or utilize AC power through inverter
- One case with two functions - storage and frame

Including:

- 1 Solar panel : 50W Polycrystalline silicon solar panel x 3, size : 925 x 330 x 25 MM / SET
- 2 Storage case with standing function to mount solar panels
- 3 3 in 1 wire connectors : All 3 solar panels can be connected in an easy fashion
- 4 Alligator battery clamp and extension cord & extended cable
- 5 L shape metal part (Large x4, Small x3), Screw x11
- 6 500W 12V solar MPPT (Maximun Power Point Tracking)
- 7 1000W inverter (Optional)

How Solar Works ?



55W SOLAR 12V POWER GENERATOR KIT

Green
Energy

P8

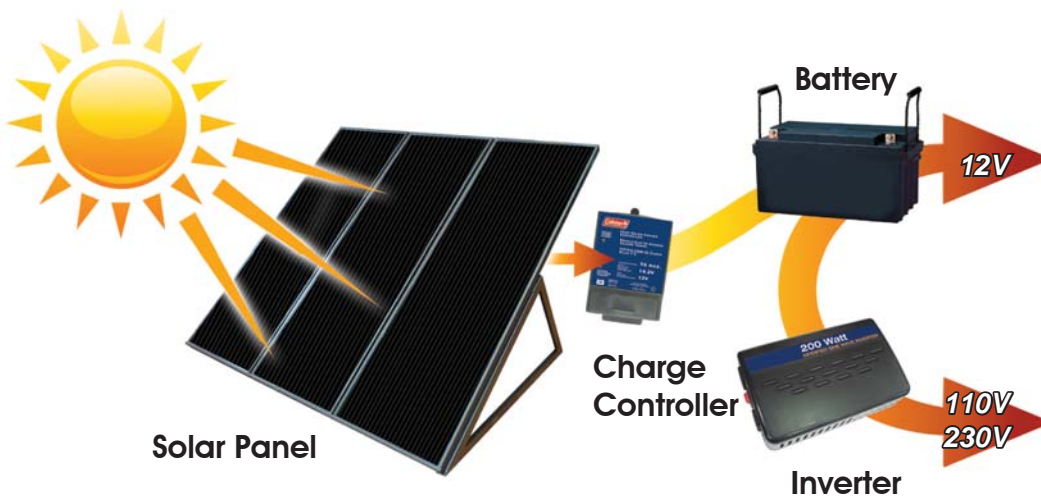


- Item No.: UAS58051
- Weatherproof • Portable • More efficient
- Easy installation • Maintenance free

Including :

- 1 Solar panel : 18 watt Thin-Film solar panel x 3, size: 925 x 315 x 25 MM / SET
- 2 Metal frame for mounting solar panels
- 3 3 in 1 wire connectors : All 3 solar panels can be connected in an easy fashion
- 4 12V DC plug, alligator battery clamps and LED voltage tester
- 5 200W inverter
- 6 12V socket for powering 12V products
- 7 7 Amp solar charge controller

How Solar Works ?



Using the power of the sun, the portable solar products offers an ideal way to maintain the 12 Volt batteries of automobiles, boats, tractors and more!

- Made of durable ABS plastic and amorphous/crystalline solar cells
- Amorphous solar panel works in all daylight conditions, even on cloudy days
- Maintenance free / Easy installation
- Charges in all weather conditions
- Temperature Range: -40° to 176° F

2.5W BATTERY MAINTAINER

- Item No.: UAS51802
- Including:
 - 7.5ft Wire
 - Battery Clamps
 - O Ring Connector & Fuse
 - 12V DC Plug
 - Suction Cups
- Size: 35.0 x 12.7 x 1.3 CM



7W BATTERY TRICKLE CHARGER

- Item No.: UAS51807
- Including:
 - 4 Stainless Steel Screws
 - 10ft Wire
 - 12V DC Plug
 - Battery Clamps
- Size: 33.3 x 35.6 x 1.9 CM



7.5W FOLDING SOLAR CHARGER

- Item No.: UAS22007
- Including:
 - 12V Female CLA Adapter
 - Convenient Hang-Tabs
 - Secure Velcro Folding
- Size: 47.0 x 17.0 CM



SOLAR DECOY CAMERA

- Item No.: UAS82340
- Flashing red LED
- Use indoors or outdoors
- Deters theft, robbery and vandalism without the high cost of a real security camera system
- Size: 17.8 x 15.2 x 7.6 CM



SOLAR MOTION LIGHT 60 LED

- Item No.: UAS82156
- 60 white LEDs brighten up any outdoor space
- Solar panel is weather resistant & can be mounted almost anywhere
- Charges during the day and works at night
- Includes rechargeable batteries x 5
- Ideal for remote locations
- Size: 22.5 x 14.5 x 20.6 CM

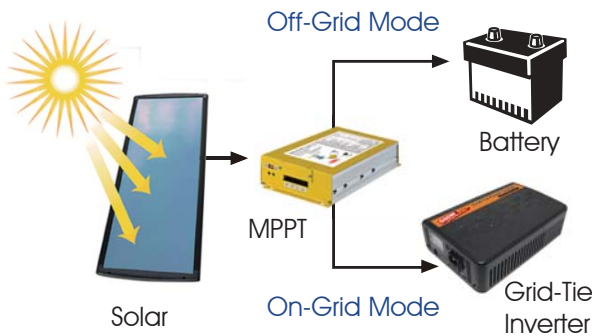


500W SOLAR ON-GRID / OFF-GRID MPPT CHARGER

- MCU fully digital-controlled MPPT solar charger
- Protections : Short circuit / Overload / Low voltage / High voltage / Over temperature
- Large DC input voltage range
- Buck- boost conversion



※ MPPT : Maximum Power Point Tracking



Item No.	UP-5P43	UP-5P33
Input voltage	12V	24V
Input voltage range	DC 10V~43V	DC 15V~68V
Rated input voltage	DC 36V	DC 57V
Stand by current	≤0.1A	≤0.1A
Rated input current	13A	9A
Input high voltage protection	≤44V	≤68V
Recommended photovoltaics devices open circuit voltage	≥44V	≥68V
Output voltage range	DC 9V~16V	DC 18V~32V
Output low voltage protection	9V	18V
Maximum outputing current	28A	25A
MPPT efficiency	92%	94%
Over-temperature protection	70°C	
Restore operating temperature	55°C	
Dimension / Weight	222 x 143 x 51 MM /1.42 KG	

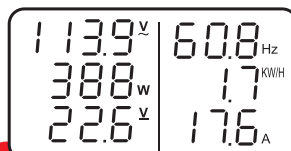
OFF-GRID POWER INVERTER WITH USB PORT

Item No.	Wattage	AC Output	AC outlets	Dimension (MM)	DC input	Safety available	
UP-8P38	150W	100V or 120V	2	155×100×50	12V or 24V	ETL	
UP-8P3C	300W						
UP-8P3G	500W						
UP-8P4L	1000W						
UP-8P4N	1500W						
UP-8P4Q	2000W						
UP-53DA	200W	220V or 230V	1	166×122×67	12V or 24V	E-MARK	
UP-53DF	400W			185×122×67			
UP-53DH	600W			225×122×67			
UP-8PAL	1000W			2			300×175×84
UP-8PAN	1500W						

300W / 500W DIY GRID-TIE INVERTER

- Utility tied PV inverter with sinusoidal supply current
- High power conversion efficiency
- Low output current THD
- LCD display – system data
- Anti-islanding design
- Direct plug into wall outlets
- Protections:
Short circuit / Overload / Low voltage
High voltage / Islanding / Over temperature
- Approved by CE, FCC, UL1741, IEEE1547, CB

LCD Display



V : AC Voltage Hz: Hertz
W: Watt KWH: Kilowatt per hour
V : DC Voltage A: Ampere



AC Output



DC Input

How it works ?



Item no.	UP-8P6C		UP-8P6G		UP-8P8C		UP-8P8G	
Max. continuous watt	300W		500W		300W		500W	
DC input voltage range	24V(19-41V)	48V(37-63V)	24V(19-41V)	48V(37-63V)	24V(19-41V)	48V(37-63V)	24V(19-41V)	48V(37-63V)
DC input low voltage protection	19±0.5V	37±1V	19±0.5V	37±1V	19±0.5V	37±1V	19±0.5V	37±1V
No load current	≤0.1A							
DC input high voltage protection	41.5±0.4V	63.5±0.5V	41.5±0.4V	63.5±0.5V	41.5±0.4V	63.5±0.5V	41.5±0.4V	63.5±0.5V
Input fuse (outside)	20A x 1	10A x 1	40A x 1	20A x 1	20A x 1	10A x 1	40A x 1	20A x 1
DC input high connecting protection	Fuse							
AC output voltage range	120V (105.6-132V)				230V (184-264.5V)			
AC voltage frequency range	60±1.0 HZ				50±1.0 HZ			
AC output power factor (PF)	>0.9							
AC output total harmonic distortion	<5%							
Continuous output power	300±20W		500±30W		300±20W		500±30W	
Input voltage (VDC)	27.6±0.5	52±1.0	27.6±0.5	52±1.0	27.6±0.5	52±1.0	27.6±0.5	52±1.0
AC output fuse	250V / 10A x1							
Dimension / Weight	27 x18 x 8 CM / 1.7 KG							

POWER WALKER

- Easy and portable type
- Max. AC output : 150W
- USB port : 2.1 A x 2
- High power LED light
- Battery level indicator
- Battery replacement



USB Port



High Power LED Light



Charge In



AC/DC Adapter



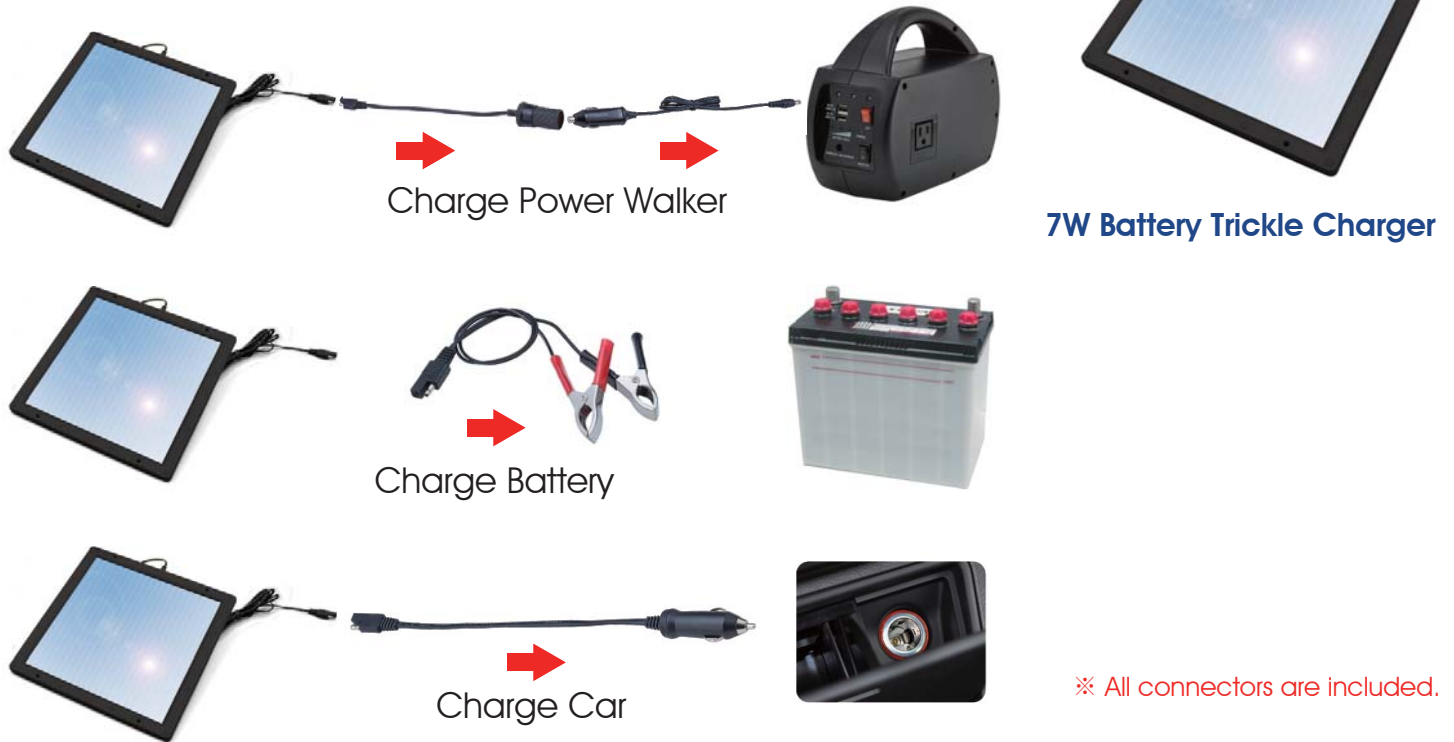
Battery Replacement

Item No.	UP-5HAA	UP-5HBA
Output voltage	AC 100 V / 110 V / 120 V / 220 V (According to different countries)	
	USB DC 5.0 V / 2.1 A	
Output wave	Modified sine wave	
Output power	150W (Continuously) , 300W (Peak)	
Charging time	3 - 4 hours (Charge in car)	
LED light	White light x 3 LED (About 70 cd)	
Battery charging indicator	Green light	
Battery capacity	Lead-acid type	Lithium iron type
	12 V / 9 AH	12 V / 9.45 AH
Approx. weight	4.1 KG	2.3 KG
Dimension	27(L) X 10(W) X 22 (H) CM	

BACKUP POWER COMBO

3 smart ways to use your Backup Power Combo!

Get & Use power smartly with eco-friendly solar energy



PORTABLE ANION AIR PURIFIER

- Item No.: UP-3E11
- Creates full of anion to clean air as fresh as in forest.
- Not only decreases germ and odour efficiently, but also neutralizes remnant chemistry in car.
- No noise, material-consumption free and no more chemical contamination
- Portable designed for use in car, office, room or any polluted places.
- Built-in rechargeable battery to supply over 30 hours of continuous use!
- Size: 112 x 74.5 x 34.5 MM



Anion Air Emitter



SMART BATTERY CHARGER

Item No.	UP-A1A3
AC input rated voltage	100V~240V
AC input frequency	47HZ~63HZ
AC input current	1.5A / 0.75A
AC input power	97W
AC input quiescent current	0.05A
DC output voltage range	>6V
DC output current	5A ± 10%
DC output power	75W
Max. DC charge current	5A
Max. DC charge voltage	14.7V ± 0.3V
DC floating voltage	13.65V ± 0.2V
Total charge hours	12 HRS ± 30 MIN
Max. floating charge hours	1HR±15 MIN

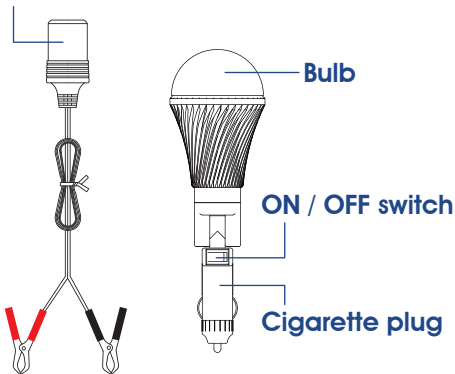


DIRECT CURRENT (DC) BULB

- Stanley LED used
- Applicable for 12V and 24V
- Non-polarized design
- Made for stand-alone solar and wind
- Warm white for indoor and outdoor use
- No hazard of electric shock



Extension cord



Item No.	DD-3XWM1R
Input voltage range	DC 12 - 28V
Power consumption	Max. 4.5W
Color temperature	3000K
Luminous flux	250 LM ± 10%

MOBILE HYBRID POWER STATION

Dimension: 280(L) x 150(W) x 350 (H) CM / Weight : 160 KG

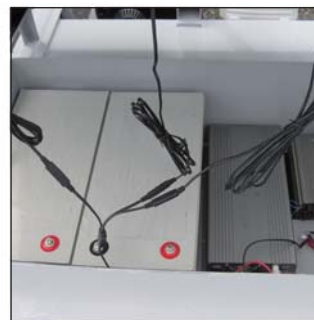
Wind turbine	600W (Pole heigh : 230 CM)
LED lamp	20W / 2500 LM
Solar panel	55W / 150W (3 pcs in total) Dimension : 92.5(L) x 31.5(W) x 2.5(H) CM
Gas generator	4.5 L (Continuous use 3.5 - 4.5 hours) Rated power output : 700W Peak power output : 1000W Weight : 18.5 KG Dimension : 41.5(L) x 35.5(W) x 38(H) CM
Gas tank	Capacity : 25 L Dimension : 33(L) x 24(W) x 42(H) CM
Control box	Content : Inverter, MPPT, Battery x 2, Mechanical stop switch, Solar panel controller Batteries : 12V, 200 A/HR (2 pcs) Inverter : 1500W pure sine wave inverter charger Dimension : 84(L) x 56(W) x 30(H) CM



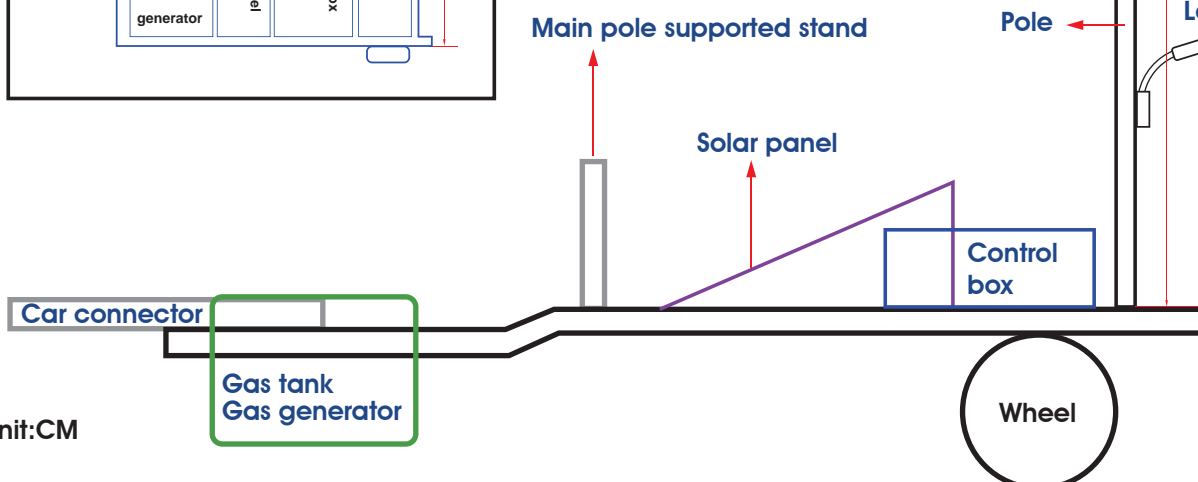
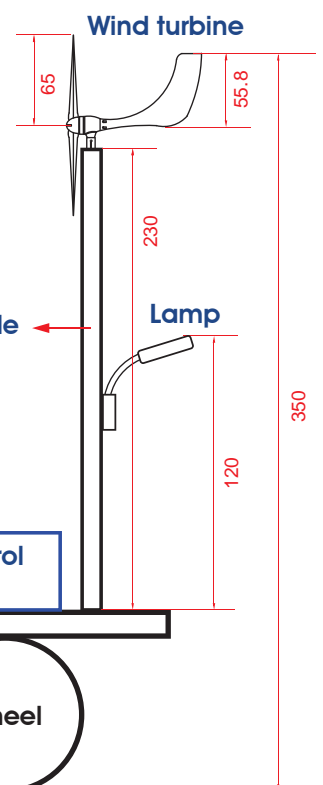
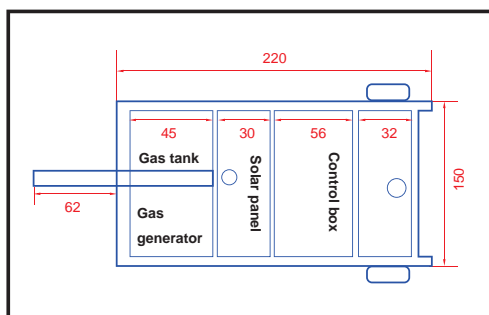
LED lamp



Gas tank / Gas generator

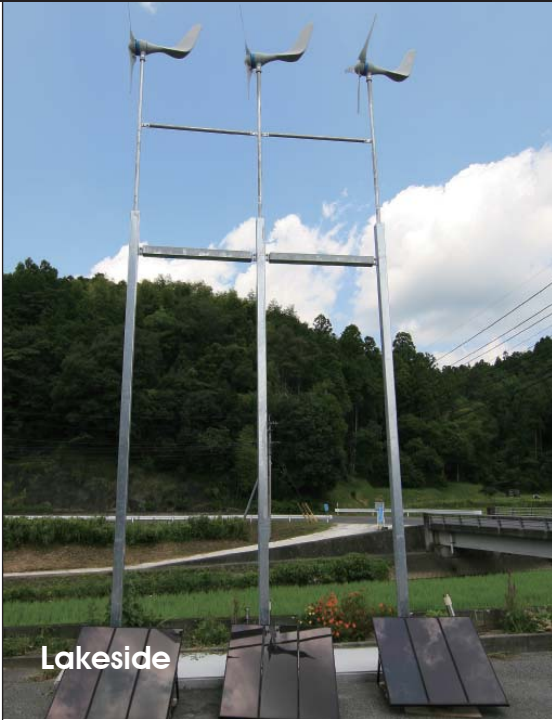


Control box

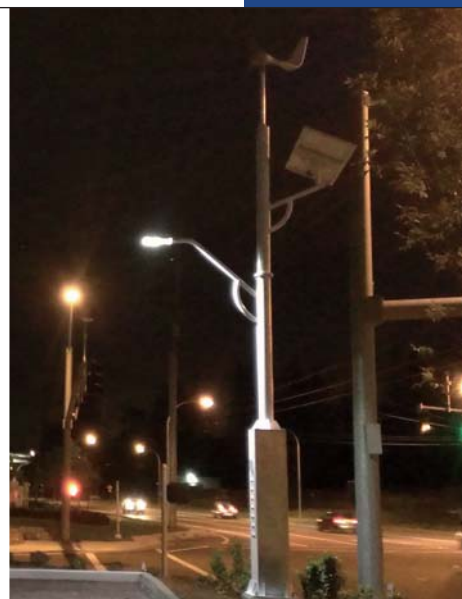


Unit:CM

WIND TURBINE INSTALLATION EXAMPLE



HYBRID STREET LAMP SYSTEM INSTALLATION EXAMPLE



HYBRID STREET LAMP SYSTEM INSTALLATION EXAMPLE



CKS Memorial Hall



Parking lot



Highway



Riverbank



Park



School



Hospital

